

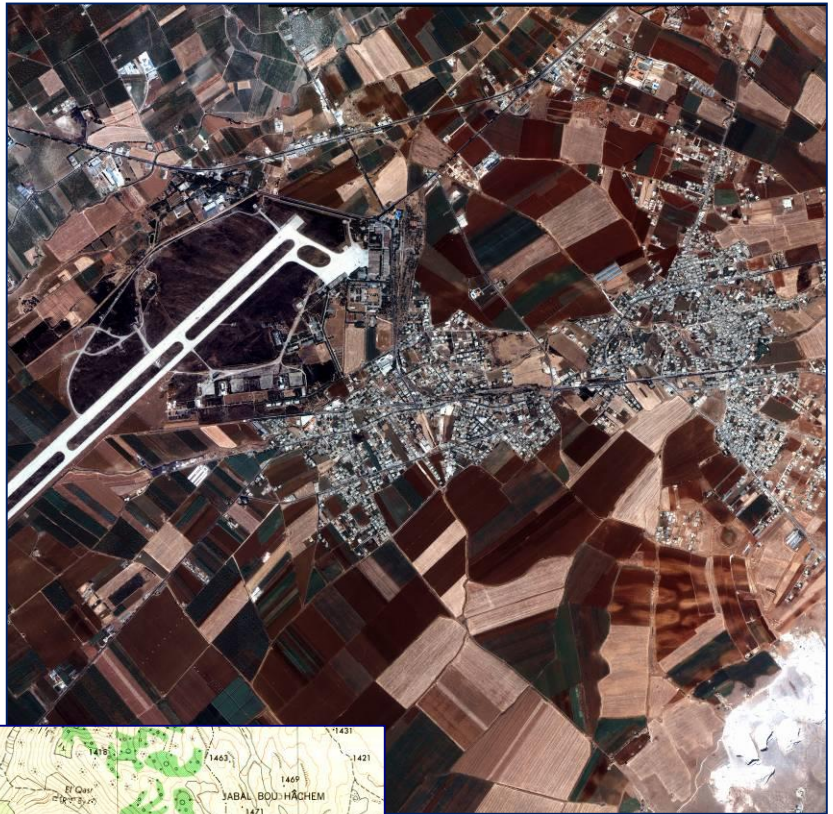
Gas Pipeline Route Evaluation

EDESSA was retained by the Tractebel Ingegneria (TI) - a division of the Suez Group on behalf of the Ministry of Energy and Water (MEW) in order to investigate the optimal route for a gas pipeline that would connect the various power plants of Lebanon.

The coastline pipeline route (Beddaoui - Tyr) was investigated both onshore and offshore, while the interior pipeline route (Zahrani - Baalbeck) was investigated along a number of possible alignments onshore of course.

The evaluation relied on the latest satellite imagery obtained from the US IKONOS satellites.

The satellite images were orthorectified in order to be read in conjunction with topographic maps. These images provided a resolution accuracy of 1m.



The satellite imageries were cross-referenced with the 1:20,000 topographic maps of Lebanon in order to verify topographic and land features along with the land use and residential development.

The objective is to update at a later stage the topographic maps that are over 40 years of age based on the satellite imagery that was obtained from very recent satellite coverage.

Satellite imagery can also offer a variety of data interpretation based on infrared, thermal and ground coverage features.