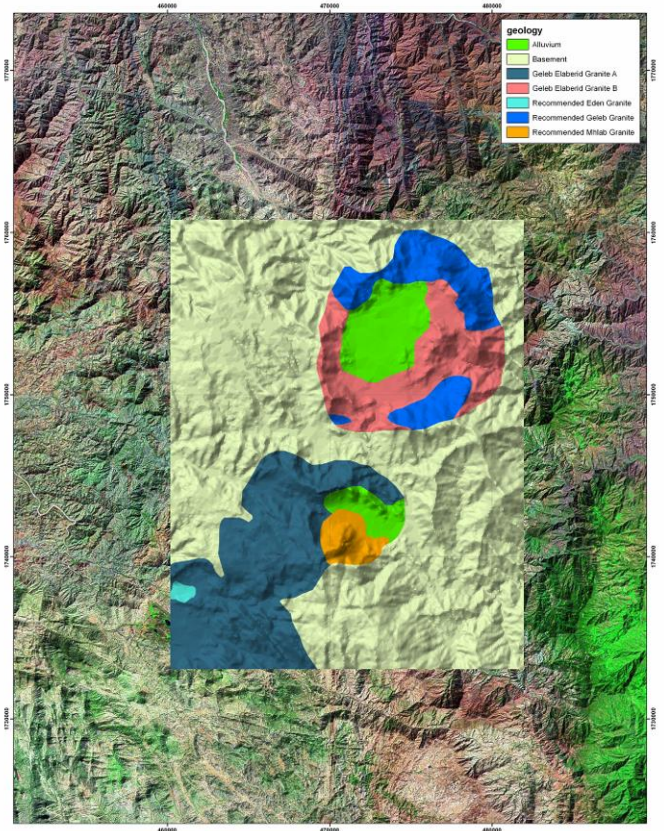
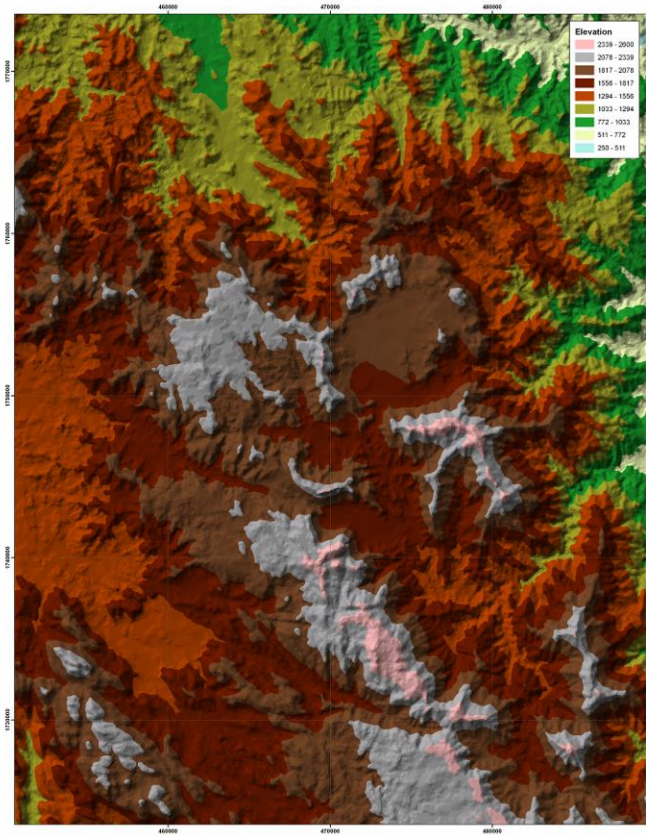


# Evaluation of Granite Quarrying Potential Eritrea



EDESSA was retained by **Qatari Diar** to conduct a geological appraisal of a site in **Gheleb, Eritrea** that would be used as a quarry for granite.

The project was conducted jointly with the US Industrial Engineering firm MAVERICK and the French Financial Consulting Company SOLVING in order to present a complete report on the feasibility of developing a marble facility in Eritrea.

EDESSA's team focused on the geology in order to define the quality and quantity of raw material required for the production of granite. EDESSA also evaluated the availability of water and addressed the Environmental, Health and Safety aspects of such a project.

