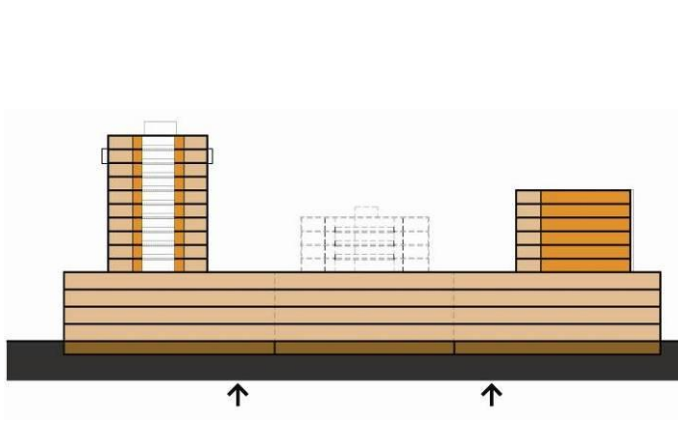


Ibn Walid Tower - Homs , Syria



EDESSA was retained by [Qatari Diar](#) and the [Governorate of Homs](#) to prepare an assessment and a rehabilitation plan for the Ibn Walid Towers in the Old Central District of the City of Homs.

EDESSA teamed with three large US Consulting Firms - Gensler, Norris Design and S.A. Miro - for the technical evaluations, AAA for the architectural aspects and Solving international for the market study.