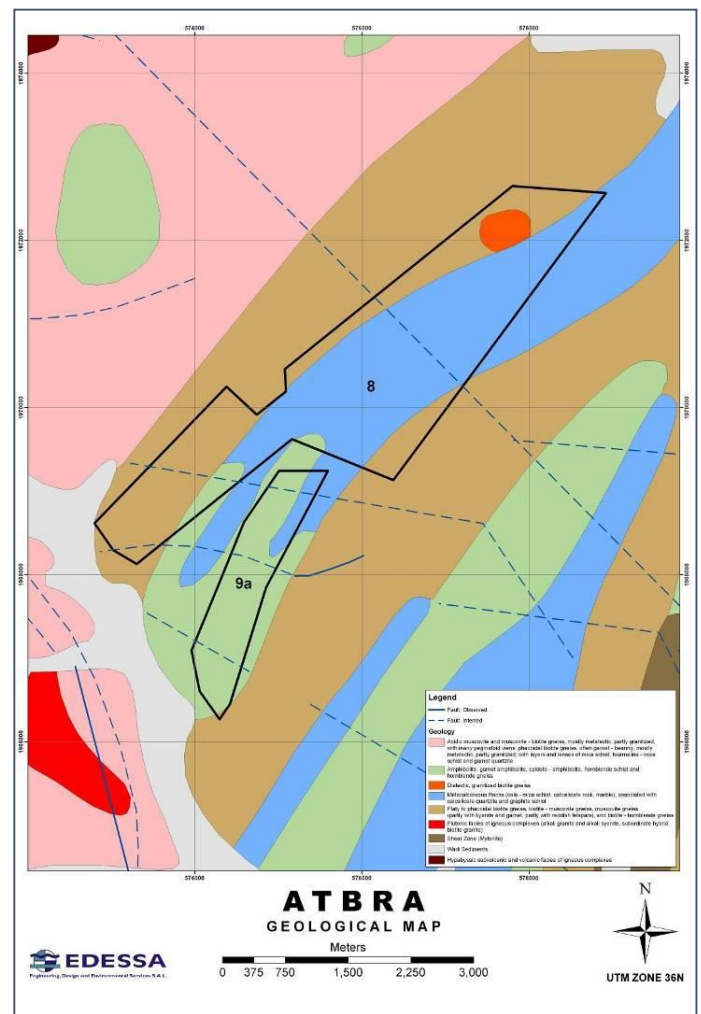
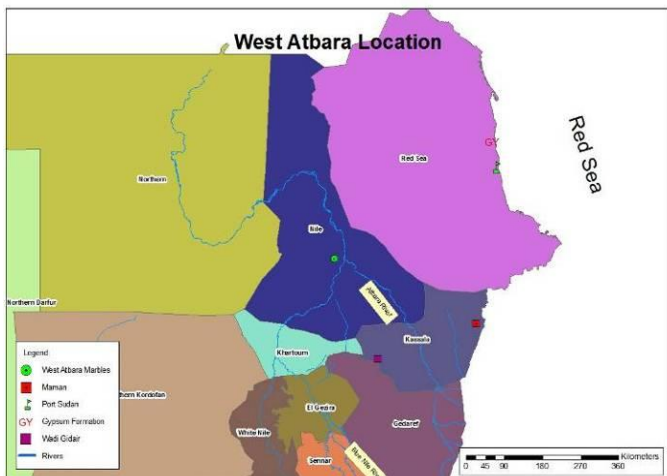
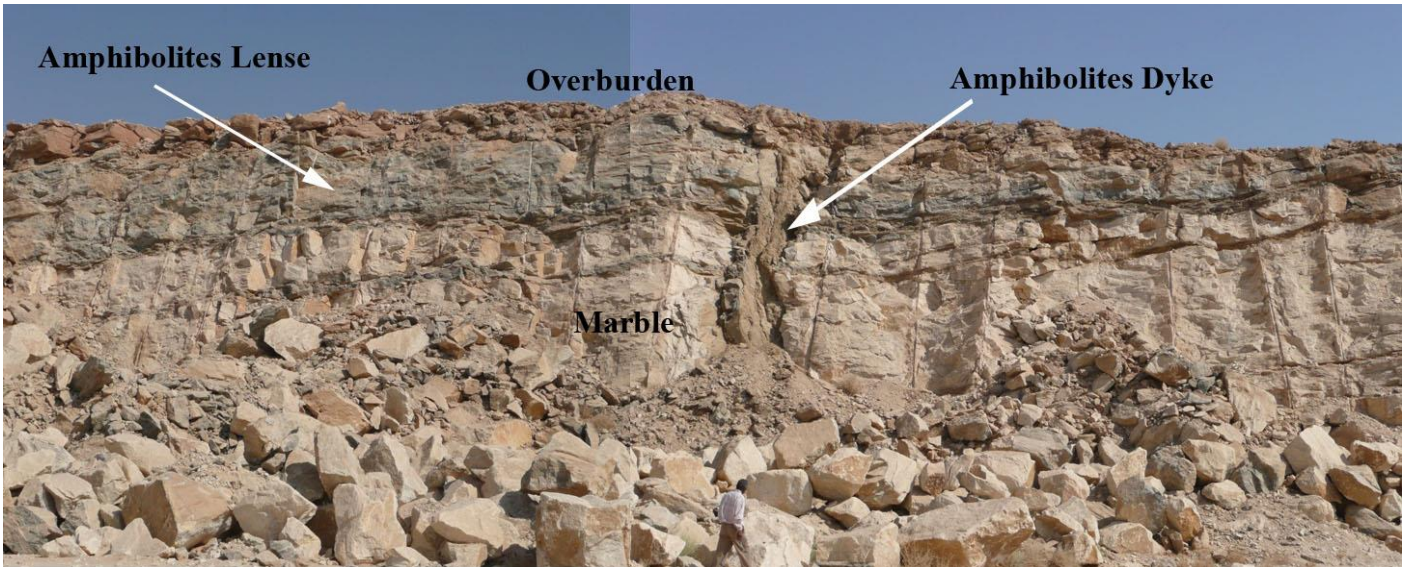


Evaluation of Cement Quarrying Atbara, Sudan



EDESSA was retained by the **Qatari Diar** to conduct an evaluation of cement quarrying potential of a quarry site located in **Atbara**.

The EDESSA team visited the site in order to evaluate raw material production targets; to study the geological and hydro-geological settings of the proposed quarry, and to map the quarry layout.

The objective of the study was to identify and provide information to assist in determining whether the proposed site is suitable for the exploiting raw material for cement production.