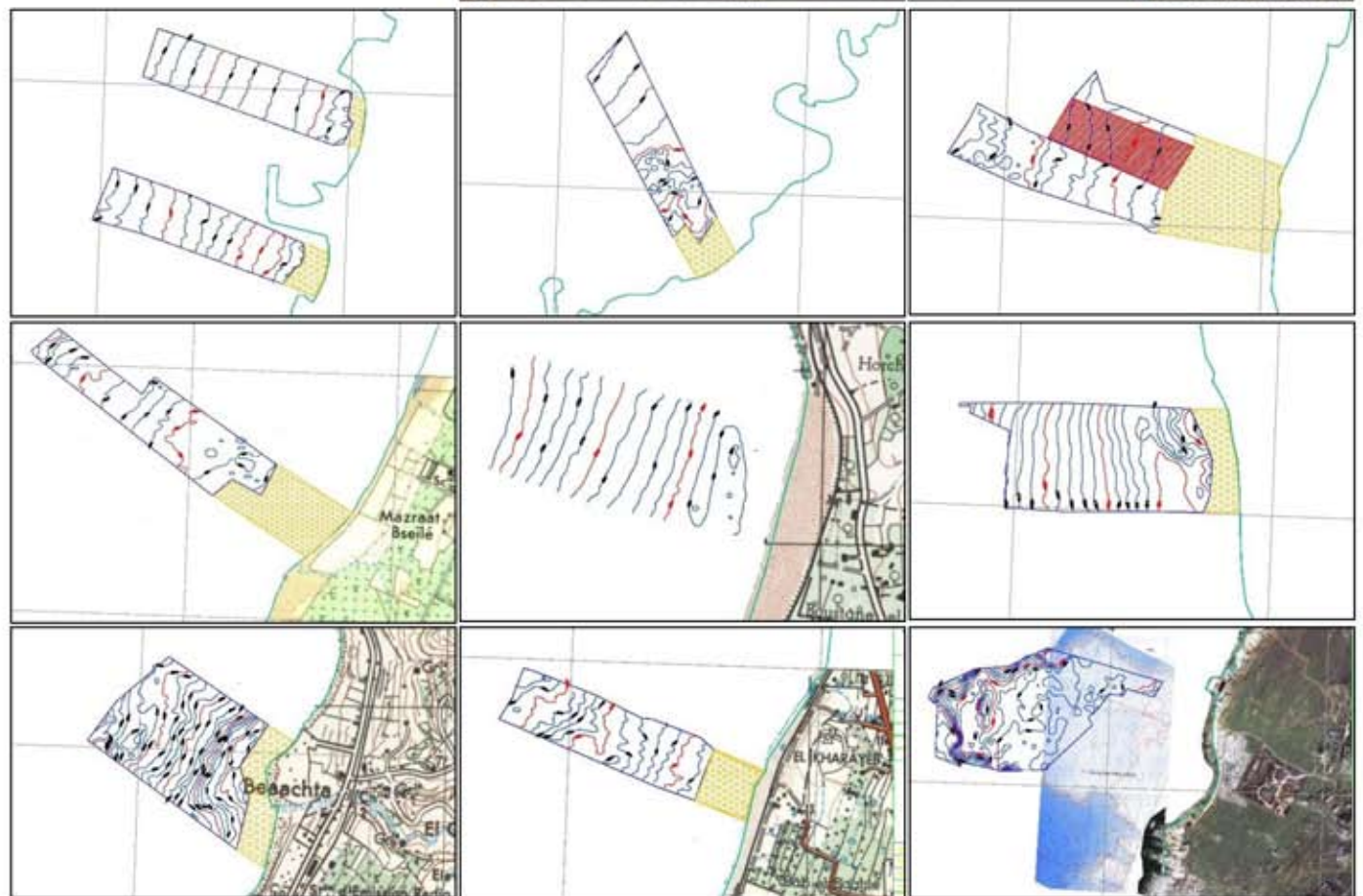
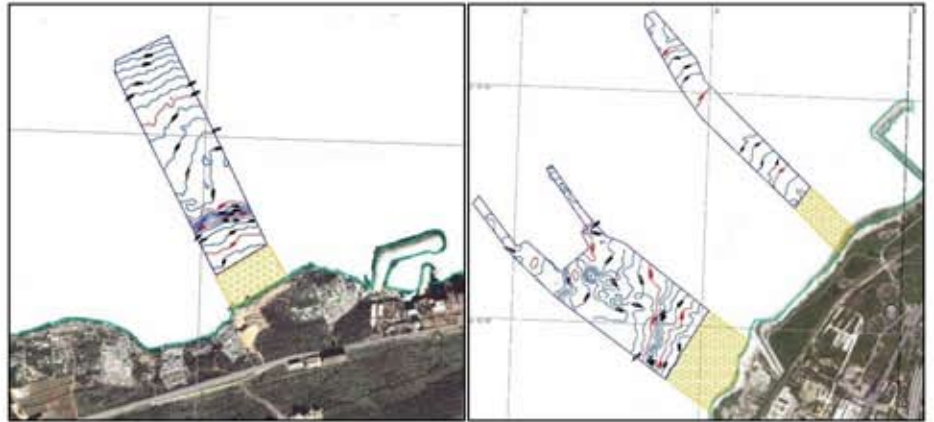


Bathymetric Surveys - Pipeline Landings

EDESSA was commissioned by Tractebel and the Ministry of Energy and Water (MOEW) in order to conduct nearshore bathymetric surveys at 10 locations across the coast of Lebanon considered as possible landings for the marine gas pipeline. A total of 142 km of survey lines were conducted using EDESSA own survey vessel and echosounding equipment. These areas included:

- Hreiche
- Selaata
- Amchit
- Zouk
- Damour
- Jieh North
- Jieh South
- Zahrani
- Litani
- Tyr



CLIENT:



منشآت النفط في لبنان
Lebanon Oil Installations

Tractebel Energia

GDF SUEZ

EDESSA