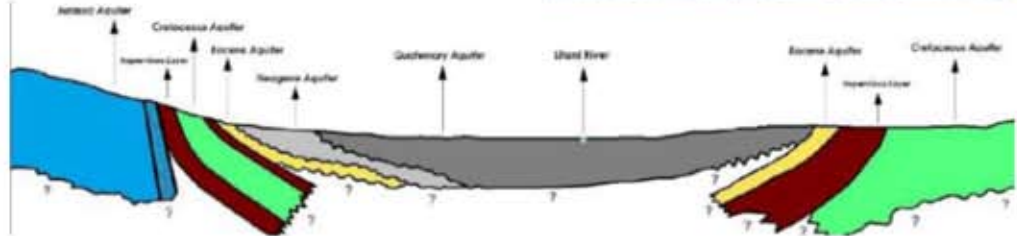
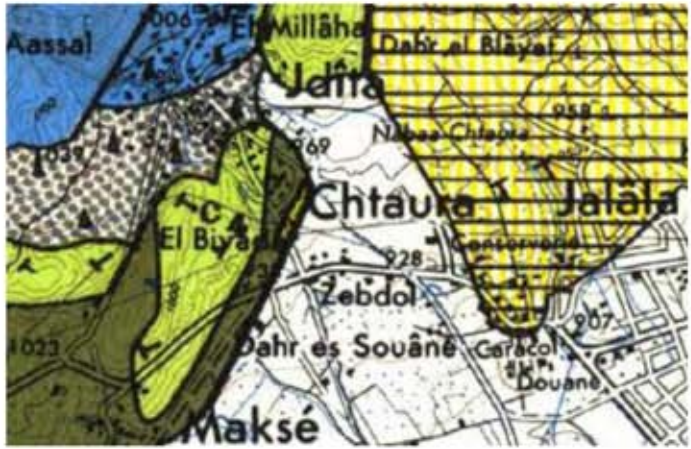


# ESIA and water resource management study

## Rehabilitation of Chtaura water network

EDESSA was commissioned by Oxfam to undertake an Environmental and Social Impact Assessment (ESIA) and Water Resources Management Study as part of the rehabilitation of the water distribution network for Chtaura. The projects included an extensive quantitative baseline characterization that included:

- Air monitoring
- Water testing
- Topographic surveys
- Geotechnical Investigations
- Groundwater study
- Social Survey
- Public hearing



CLIENT:



**OXFAM**

