

# Tfail Development Master Plan

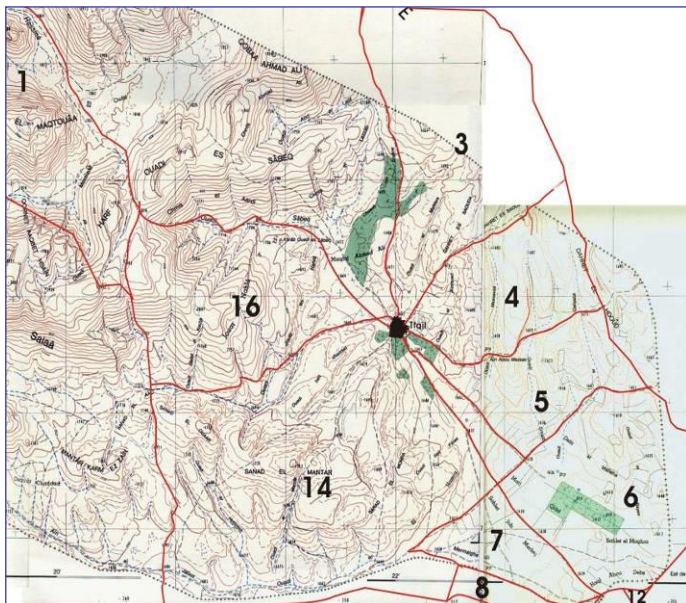
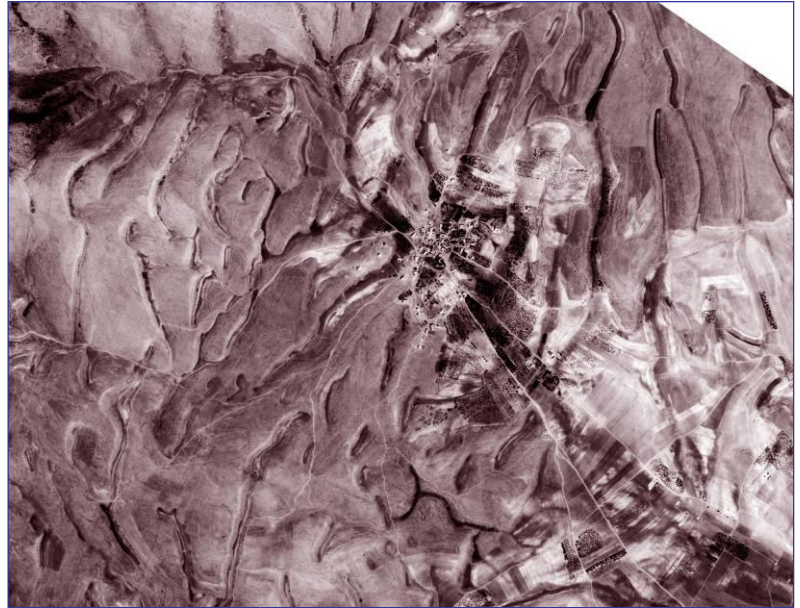
EDESSA was retained by the Central Bank of Lebanon (BDL) to submit an extensive proposal for carrying out a Master Plan for the evaluation of potential natural resources in the Tfail region, Bekaa - Lebanon.

The main purpose of the proposed Master Plan was to provide BDL with a methodology and procedure for identifying, evaluating and quantifying the major potential resources of the study area.

Our scope of work involved the preliminary evaluation of the area's natural resources, for potential investment and exploitation purposes. The area of study comprised 27 separate lots in the Tfail region, with a combined area of 41,628,338m<sup>2</sup>.

The following aspects were covered as part of the entire proposed natural resources evaluation process:

- Desk studies that included previous reports and investigations as well as Government Decrees related to project development and land-use investments in the region.
- A preliminary assessment of the potential availability of good quality marbles or limestone rocks that could be extracted for commercial use. This part of our scope of works also included an extensive research about commercial stone types in the region and international guidelines and standards for proper identification, value-estimation, and extraction.



- A geological, hydrological, and aerial photographic interpretation of the area.
- A preliminary assessment and proposed detailed investigation of the entire region for identifying possible economic groundwater resources and suitable ground cover soils for potential vegetation use.
- An outline on available geophysical methods (Electrical Resistivity and Ground Penetrating Radar - GPR for further detailed investigation about the subsurface conditions of the region.
- An outline on available geotechnical methods (borehole drilling with sampling and physical/chemical testing) for a further detailed investigation about the subsurface conditions of the region.
- An outline of a proposed detailed Engineering Quarrying Plan and an Environmental Impact Assessment.