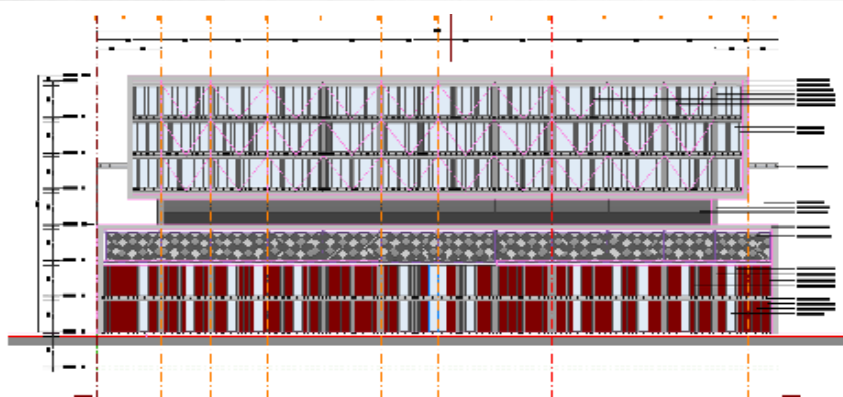


Assessment, Design and CM Services Al Zakari Building, Riyadh, KSA



EDESSA in association with JASSAMA Construction was retained by **Solidere International** to present a structural and electro-mechanical engineering assessment of Al Zakari Building located in Hay Al Olaya Street in Riyadh, Kingdom of Saudi Arabia. The works also includes coordination of civil design with the architecture company, preparation of tender document and construction management.